

DS-K3G225X
Value Tripod Turnstile

By adopting the turnstile integrated with the access control system, person should authenticate to pass through the lane via presenting cards, face, or QR code, etc. It is widely used in attractions, office, construction sites, residences, etc.

- Bidirectional (Entering/Exiting) lane.
- Fire alarm passing: When triggered, the arms will be dropped automatically for emergency evacuation.
- High-brightness LED indicates the entrance/exit and passing status.

▪ Specification

System	
Motor	NA
MCBF	≥ 2 million times
Network	
Wired network	10/100 Mbps self-adaptive Ethernet
Interface	
Network interface	1
Lock control	2
Exit button	2
Alarm output	2
TAMPER	NA
RS-485	4
RS-232	2
Wiegand	2
Fire alarm input	1
Case input	2
Hardware	
Access controller	Supplied
Capacity	
Card capacity	500,000
Event capacity	500,000
Authentication	
Card Type	EM card or M1 card (actual corresponding card type refer to product model names).
Function	
Configuration via PC Web	Support
Configuration via mobile Web	Support
Audio prompt	Support
Communication protocol	TCP/IP
Keypad configuration	Support
Keyfob	Not support
General	
Throughput	25 to 60 persons per minute The actual throughput is affected by the person passing rate and passing method.
Lane width	550 mm (21.65")
Barrier material	SUS304 stainless pipe
Pedestal material	SUS304 stainless steel 1.0 mm and SUS304 stainless steel 0.8 mm
Power consumption	Standby: 35 W Working: 45 W Peak: 55 W
Working temperature	-20 °C to 65 °C (-4 °F to 149 °F)
Working humidity	0% to 95% (No condensing)
Protective level	IPX4
Dimensions	Without package: 1200 mm × 233 mm × 1000 mm (47.2" × 9.2" × 39.4") With package: 1350 mm × 410 mm × 1120 mm (53.1" × 16.1" × 44.1")
Weight	Net: 30.58 kg (67.41 lb); Gross: 37.8 kg (83.33 lb)

Approval	CE/CB/RoHS/REACH/WEEE
Power supply method	Power supply: 100 to 240 VAC~, 50/60 Hz, 1A-0.5A
Configuration	
Lane width	550
Pedestal length	1200 mm
Module selection	YES
Pedestal width	233 mm
Wall distance	40 mm
Base	YES
Barrier material	Stainless steel pipe
Application environment	Indoor and outdoor
Authentication mode	Card,Face,QR code
Card type	EM,M1
Recommended width	550 mm
Base model	DS-KSM01/G301
Authentication exclusionary	Card,Face
Product type	Tripod Turnstile

▪ Note

The main element of the turnstile is stainless steel, which is rust less (antioxidant) and corrosion resistant (The anti-corrosion ability in the medium of acid, alkali, and salt). In order to keep the stainless steel from being oxidized or corroded, you should clean and care the turnstile surface periodically.

The instructions and tips for maintaining the turnstile are as follows:

1. Select different stainless steel types according to the variety of the environments. You can select 304 stainless steel for common circumstances and 316 stainless steel for the scenarios of seaside and chemical plants.
2. Keep the device surface clean and dry.
3. Use non-woven cloth and ethyl alcohol to clean the dirt on the device surface.
4. Use sourcing pad (do not use mesh cleaning ball) to clean the rust on the device surface by following the wire drawing on the stainless steel. And then use non-woven cloth and stainless steel cleaner to wipe the device surface.
5. Clean and maintain the device by using non-woven cloth and stainless steel cleaner periodically. It is suggested to clean the device every month in common circumstances and every week for severe environments (seaside and chemical plants for instance).

▪ Available Model

DS-K3G225X-R/MQ-Dm55

DS-K3G225X-R/E-Dm55

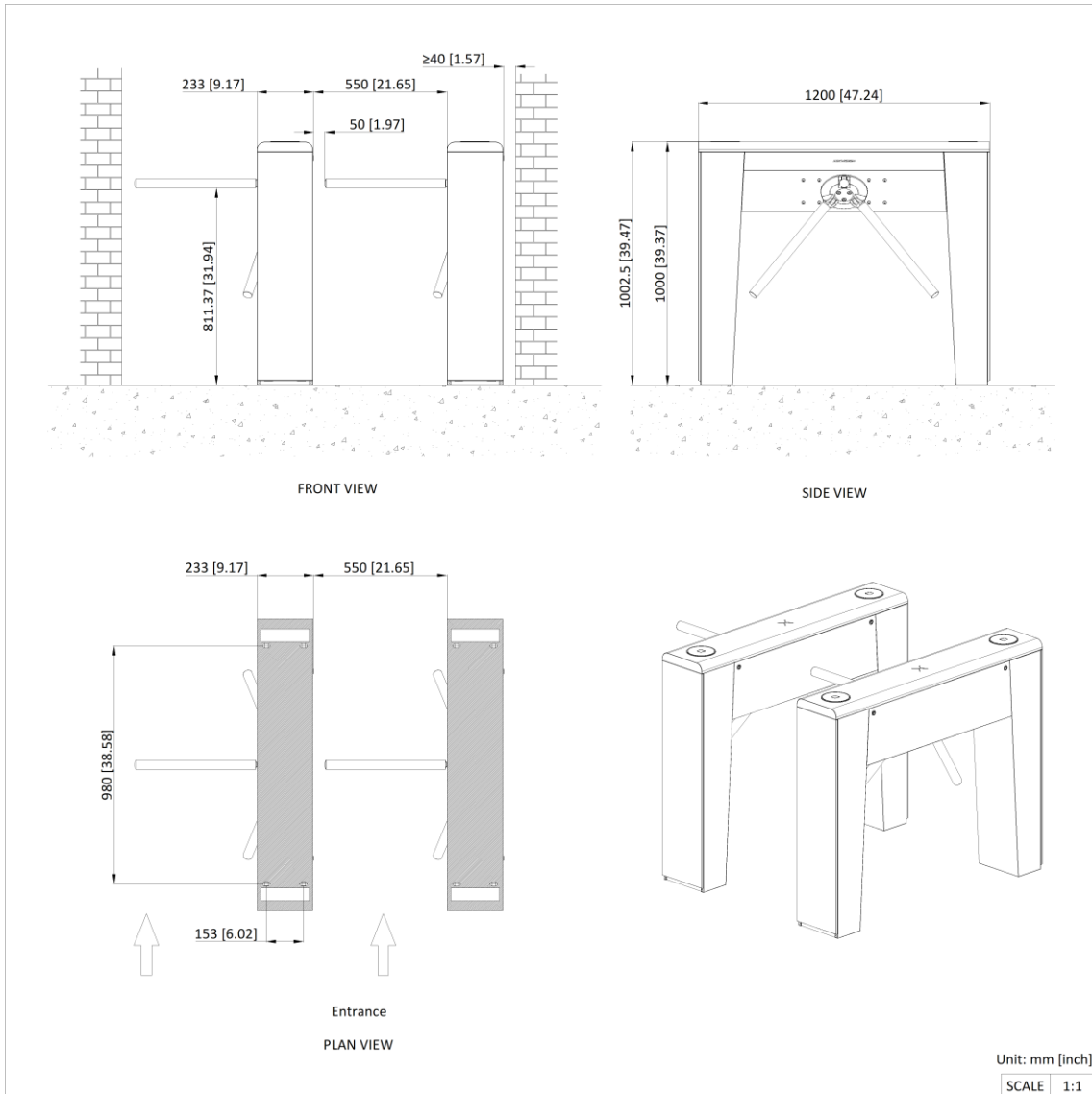
DS-K3G225X-R/M-Dm55

DS-K3G225X-R/M-Dm55/Produce

DS-K3G225X-R/MPa-Dm55

DS-K3G225X-S

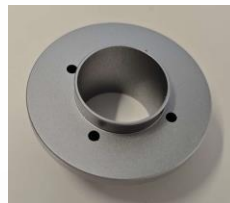
▪ Dimension



▪ **Accessory**

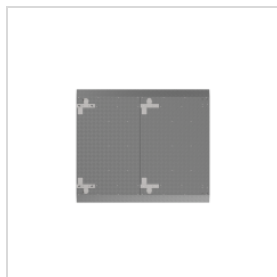
▪ **Included**

DS-KSB02-Pa



▪ **Optional**

DS-KSM01/G225



See Far, Go Further



www.hikvision.com
support@hikvision.com

