

i-PRO Management Software

i-PRO WV-ASM300 video management software enables a secure, scalable H.265/H.264 ready, multi-camera, multi-recorder, multi-site surveillance management environment suitable for any large to small scaled video security network systems which require centralized operation and ease-of-use.

The new 3D Dewarp feature helps you to have distortion-corrected images from fish-eye cameras, that you can use virtual PTZ operations for better operability and monitoring experience.

The WV-ASM300 can connect up to 100 network video recorders (NVRs) and digital video recorders (DVRs), 64 encoders, and 256 directly connected cameras. Up to 6,400 cameras registered in the recorders and 256 cameras registered in the encoders are automatically indexed in the software. Adding Panasonic WV-CU980 system controller provides direct joystick control of your camera. Also the new built-in camera/recorder configuration wizard helps speed up your system configuration set-up time dramatically.

WV-ASM300 software supports 16:9, 4:3 and 9:16 corridor format aspect ratio video streams to be displayed on the same monitor. All LIVE, MAP, and OPERATION monitors support 4K resolution for demanding high-resolution operation.

With the combination using EXTREME series cameras and recorders provide full end-to-end AES-256bit encryption system with for mission critical applications. Also, camera SD card full-encryption-video-recording on the edge can be quickly downloaded and decrypted under a secured environment.

FULLY INTEGRATED

- Integrated camera control, viewing and recorder management
- Integrates EXTREME series H.265 & i-PRO H.264 equipment

POWERFUL USER INTERFACE

- NEW user-interface design & 4K native GUI enhances usability
- Automatic camera configuration wizard speeds system set-up
- WV-ASM300 includes 3D Dewarp, multi-monitor and WV-CU980 support as standard

EXTREME DATA SECURITY

- Support SSL communication using Symantec device certification
- Support Panasonic "AES-256bit" encryption video

SCALABLE AND EXTENDABLE

- Base : 100 recorders, 64 encoders and 256 cameras
- Expandable to thousands of cameras, recorders and encoders
- Full array of software extension modules available



(System Controller WV-CU980 and monitor displays are optional.)

Extension Software

Key Features :

WV-ASE202W

- Expand the maximum numbers of screens to 64.
- Up to 4 live windows.
- Multi-monitor function using up to 6 PC monitors.
- To display the operation window, the map window and the 4 live windows simultaneously.

WV-ASE203W

- Expand the maximum numbers of registered recorders, encoders and cameras to 100, 64 and 256 respectively.
- Up to 4 licenses for the WV-ASE203W can be added.

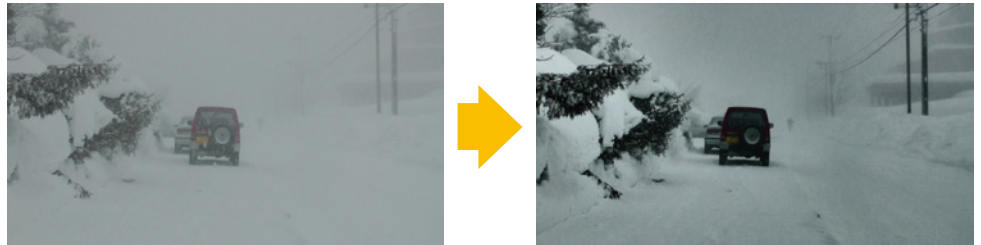
WV-ASE205W

- Visibility Enhancement Function

Spatial Tonal Correction

Snowfall and Rainfall Noise Reduction

Multi-frame Synthesis Noise Reduction



Spatial Tonal Correction , Snowfall and Rainfall Noise Reduction

WV-ASE231(W)

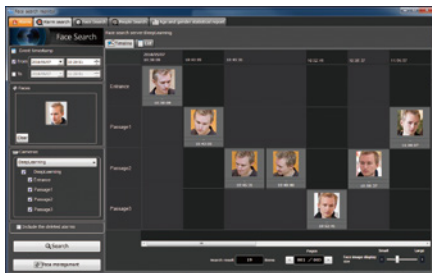
- Extension software for connecting to Facial Recognition Server Software (WV-ASF950/WV-ASF900)

Face Search

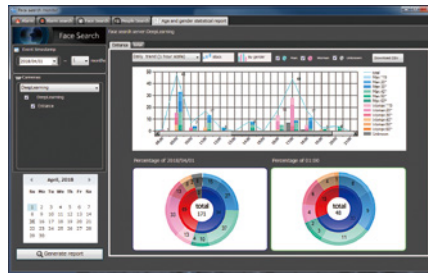
People Counting, Age and Gender Statistics

Face Matching

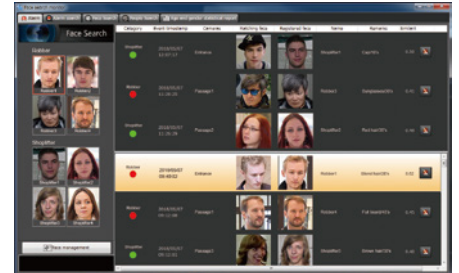
*WV-ASF950/WV-ASF900 is necessary.



Face Search



People Counting,
Age and Gender Statistics



Face Matching

WV-ASE306W

- Extension software for controlling Video Insight server

Optional Accessory

Ethernet 3D Joystick System Controller
WV-CU980



Operation Window

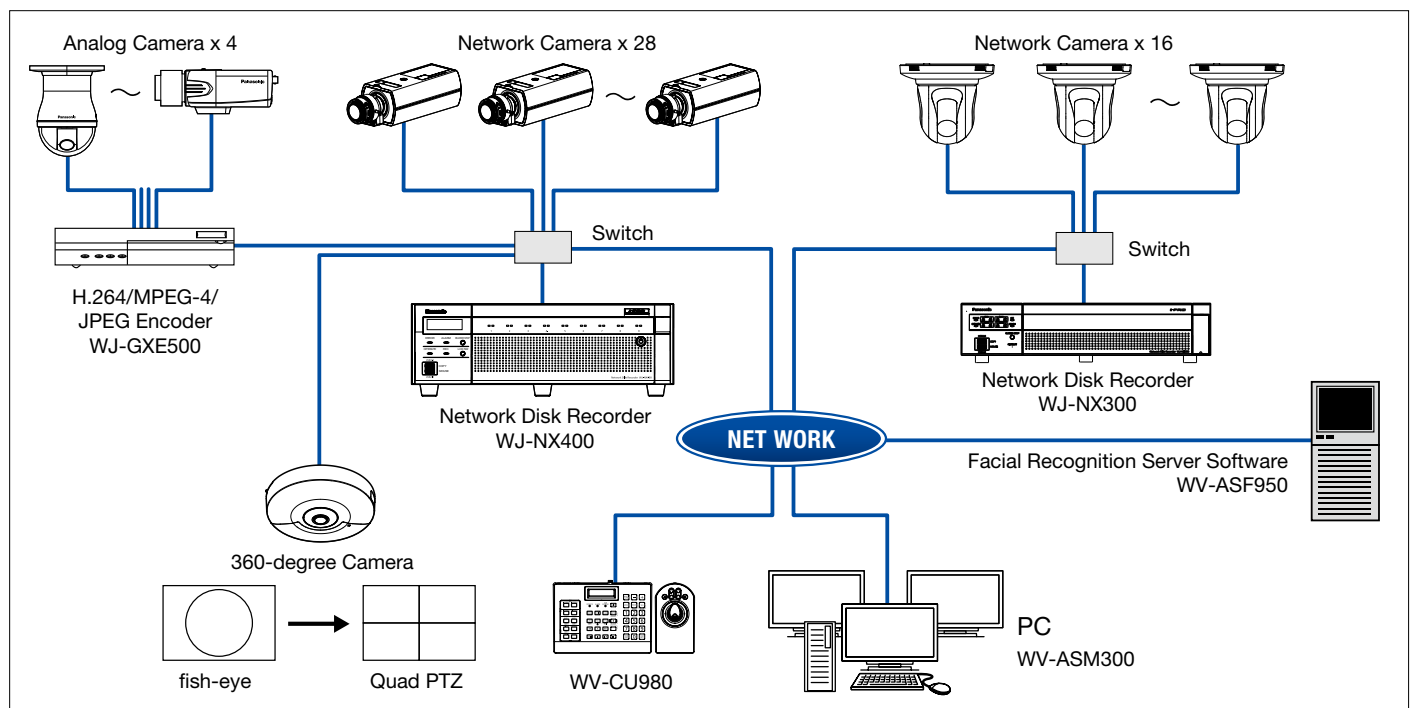


Software Comparison Chart

Functions		WV-ASM300 Management Software - Basic	+WV-ASE202W Extension Software	+WV-ASE203W Extension Software	+WV-ASE205W Extension Software	+WV-ASE231(W) Extension Software	+WV-ASE306W Extension Software		
Main Functions / Description		Live / Playback / Control							
Supported Devices	Camera	Direct	i-PRO series						
		Via Recorder	i-PRO series						
	Recorder	NVR	WJ-NX400, WJ-ND400, WJ-NX300, WJ-NX200, WJ-NV300, WJ-NV200, WJ-ND300, WJ-ND200						
		DVR	WJ-HD716/616, WJ-HD300A						
		Recording Server						Video Insight server	
	Encoder	WJ-GXE500, WJ-GXE100							
Controller	WV-CU950/WV-CU980								
Max. Devices	Camera	Direct	256						
		Via Recorder	6,400 (with WJ-NX400)					Max. 1,280 ^{*1}	
			6,400 (with WJ-ND400)					Max. 32,000 (with WJ-NX400) ^{*1}	
			3,200 (with WJ-NX300, WJ-NX200)					Max. 32,000 (with WJ-ND400) ^{*1}	
			3,200 (with WJ-ND300)					Max. 16,000 (with WJ-NX300, WJ-NX200) ^{*1}	
			1,600 (with WJ-ND200 / WJ-NV200)					Max. 16,000 (with WJ-ND300) ^{*1}	
	256 (with WJ-GXE500 / WJ-GXE500)					Max. 8,000 (with WJ-ND200 / WJ-NV200) ^{*1}			
	Recorder	100					Max. 1,280 ^{*1}		
	Encoder	64					500 ^{*1}		
	Controller	1					320 ^{*1}		
Supported Image Format		H.265, H.264, MPEG-4(i-PRO series), M-JPEG (depending on the source equipment)							
Supported Image Resolution		Depending on the source equipment (Current i-PRO Network Cameras, Encoders)							
Max. screens		20		68					
AVMD Display (Frame and Tracking Line)							Yes		
Multiple Monitors Supported		Yes (Up to 3 monitors : Operation / Live / Map)		Yes (Up to 6 monitors : Operation / Live / Map)					
3D Dewarp		Yes							
Map Function		Yes							
Audio		Yes (Live : 2-way, Playback : 1-way)							
Event Search (T&D, Event type etc.)		Yes							
VMD Search		Yes (with WJ-NX400, WJ-ND400, WJ-NX300, WJ-NX200 WJ-HD716/616, WJ-NV300, WJ-NV200)							
Image Download		Yes							
Visibility Enhancement							Yes		
Face Search^{*2}							Yes		
Face Matching^{*2}							Yes		
People counting^{*2}							Yes		
Age and Gender Statistics^{*2}							Yes		

*1 WV-ASE203W x 4 licenses and 500 recorders are necessary. *2 WV-ASF950/WV-ASF900 is necessary.

System Example



Specifications : WV-ASM300

GUI Function	Camera Control (depending on the Camera)	Pan/Tilt, Zoom, Focus, Brightness, Preset position call and program (up to 256), Auto mode (SEQ, SORT, AUTO PAN, PATROL, AUTO TRACK), AUX 1 - 3, Click centering, Wheel zoom, Drag and zoom	
	Recorder Control (depending on the Recorder)	REC, PLAY, Rev PLAY, Pause, Stop, FF (up to 96x), REW (up to 96x), Prev Record, Next Record, Prev Image, Next Image, Skip (up to 60 min.), Rev Skip, (up to 60 min.) Text	
	Event Search	Target : Recorder (Camera) / Group / Map, Search criteria : Time date, Event type, Text	
	VMD Search	Target : Recorder (Camera), Search criteria : Time date, Area In case with WJ-ND400, WJ-HD716/616, WJ-NV200	
	Thumbnail Search	Target : Camera, Search criteria : Time date, Stream, Interval	
	Multi-Screen Mode	1, 2, 3, 4, 5, 6, 7, 10, 13, 16 split	
	Sequence Display	20 programs, 64 steps/pattern, 1, 2, 3, 4, 5, 6, 7, 10, 13, 16 split Dwell time : 3 s / 5 s / 10 s / 15 s / 20 s / 25 s / 30 s / 35 s / 40 s / 45 s / 50 s / 55 s / 1 min	
	Display Performance	30 ips x 16 screens at H.264 1.5 Mbps, 30 ips x 16 screens at MPEG-4 2 Mbps, 30 ips x 16 screens at H.265 768Kbps (VGA)	
	Multi-Monitor	Up to 3 monitors (Operation / Live / Map), Up to 20 cameras can be displayed (Operation-4, Live-16)	
	3D Dewarp (depending on the Camera)	PTZ image: Pan, Tilt, Zoom / fisheye images: rotation	
	Camera Group Display	Up to 400 groups with 16 alphanumeric titles	
	Number of Maps	Up to 100 maps (JPEG or Bitmap), Link : 128 cameras and 20 maps / map	
	Image Download	Recorded images of up to 64 cameras (in case with WJ-ND400) can be downloaded Manual download only. Viewer software can be extracted from the main software.	
	Quick download	Quick download the operation monitor image.	
	SD memory Download	Indicates the function featured in some Panasonic's cameras that transfers H.264 / H.265 video files (mp4 files) saved on the SD memory card equipped with the camera to a PC using the FTP function.	
	Recorder/Camera Access	The access to the Recorder and Camera Web pages when logged in as admin	
	File Conversion	Convert a n3r file to the standard format (mp4)	
	Camera Title Display	On the GUI, Up to 16 characters	
	Clock Display	On the GUI, Time : 12H/24H, Date : 5 formats (When the image comes from the recorder)	
	Alarm Source	Panasonic alarm protocol	
	Alarm Control	Reset, Auto reset (OFF / 10 s / 20 s / 30 s / 1 min / 5 min)	
	Alarm Action	Up to 16 alarm images can be displayed on the live monitor. Corresponding camera icon on the map lights up. Alarm message on the GUI and buzzer.	
	Digital Zoom	Up to 4 times	
	Text Attachment	Free comment can be attached for each record and reviewed at later time. Up to 200 characters	
	System Log	Operation (100,000), System (1,000), Network error (1,000), Recorder error (1,000), Alarm (30,000)	
	Recorder Log Download	Operator access, Network error, Error, Event	
User Management	Registration : Up to 32 users + Administrator, ID : 4-32 digit, PW* : 8-32 digit, User level : 6 levels (Programmable), PW time limit : OFF / 31 / 92 / 184 / 366 days, Auto login : ON / OFF * Two or more must be mixed from alphabet (case sensitive), numbers, symbols		
Security Method	User authentication (ID and Password), Host authentication (IP address), Alteration detection, Activation Key Card		
System Setup	Setup page in English, French, Italian, Spanish, German, Russian, Chinese, Thai, Japanese		
GUI Language	English, French, Italian, Spanish, German, Russian, Chinese, Thai, Japanese		
General	Supported OS ¹	Microsoft® Windows® 10 Pro 32bit/64bit ² , Microsoft® Windows® 8.1 Pro 32bit/64bit ² , Microsoft® Windows® 7 Professional SP1 32bit/64bit ² The language of the OS must be same as selected GUI language. *4K cameras (WV-SFV781L / WV-SPV781L) are available only on Microsoft® Windows® 10 Pro 64bit, Microsoft® Windows® 8.1 Pro 64bit.	
	Required PC	CPU	Intel® Core i5-7500, Intel® Core i7-7700 or faster When displaying with 64-screen, when using a 9M Fisheye camera, when using the visibility enhancement function, when using a 7-series camera (3840x2160 or more), when using an H.265 camera : Intel® Core i7-7700 or faster is recommended
		Memory	4 GB or more, When using a 7-series camera (3840x2160 or more), when using H.265 format: 8 GB (4 GBx2) or more
	Graphic accelerator	VRAM : 512 MB or more, compatible with Microsoft® DirectX® 9.0c or later When using WV-ASE202W : NVIDIA Quadro P1000 X2 When using WV-ASE205W (Visibility enhancement function) : NVIDIA Quadro P1000 or NVIDIA GeForce® GTX 660 or more When using the 4K monitor* : NVIDIA Quadro P1000 *To display 4K2K resolution on a monitor at 60 Hz, connection on the display port 1.2 is required.	
	CD-ROM drive	Necessary to install this software	
	Required HDD space	Approx. 3 GB	
	Monitor	1280 x 800 pixels or more (1920 x 1080 pixels recommended), 24-bit True color or better (Full color recommended)	
	Network interface	Having a 100/1000 Mbps network port	
Web browser	Internet Explorer® 7, 8, 9, 10, 11		
Network	Proxy	HTTP proxy supported (IP address and port No.)	
	FTP	Passive/Active	
Viewer	Playback Control	Play, Rev Play, Pause, FF, REW, Prev Record, Next Record, Prev Image, Next Image	
Software	Additional Functions	Alteration detection, Save as JPEG, Two times zoom, Print	

*1 Microsoft® Windows Vista®, Microsoft® Windows® 8 not supported When using H.265 mode, 64 bit OS is required.

*2 To use two graphics boards, please use Windows 10 or turn off the Aero function on Windows 7.

In case of 4 monitor output in a graphical board, you should design the followings only.

- + Operational monitor, Map monitor, live monitor 1 and live monitor 2
- + Operational monitor, live monitor 1, live monitor 2 and live monitor 3

Trademarks and registered trademarks

- Microsoft, and Windows are registered trademarks of Microsoft Corporation in the U.S. and other countries.
- Intel and Intel Core are registered trademarks of Intel Corporation.
- NVIDIA, GeForce are registered trademarks of NVIDIA Corporation in the U.S. and/or other countries.

- All TV pictures are simulated.
- Specifications are subject to change without notice.

Important

- Safety Precaution: Carefully read the operating instructions and installation manual before using this product.
- Panasonic i-PRO Sensing Solutions Co., Ltd. cannot be responsible for the performance of the network and/or other manufacturers' products used on the network.
- When remote monitoring, please pay attention to the network design.
For details, please contact your local Panasonic sales representatives.

Panasonic®

Panasonic Corporation

Panasonic i-PRO Sensing Solutions Co., Ltd.

<https://ipro.panasonic.com>

<https://security.panasonic.com>

<https://www.linkedin.com/company/i-pro-sensing-solutions-co-ltd/>

(2A-186DA)