

iLitebeam-5AC

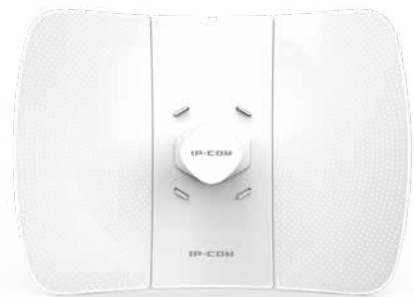
5GHz 23dBi ipMax AC Gigabit Outdoor CPE

iLitebeam-5AC

5GHz 23dBi ipMax AC Gigabit Outdoor CPE

Products Description

iLitebeam 5AC Long Range Outdoor CPE is designed to PtP&P2MP solutions for video surveillance transmission and wireless broadband access. Adopts of 11ac wireless technology and gigabit ethernet Port design, the maximum throughput for ptp connection could be up to 450Mbps. It features with 23dBi dual polarization directional antenna to provide an efficient way to pick up and maintain a stable long range range connection.



Key Feature

- 5GHz 11AC 867Mbps
- 23dbi directional antenna
- One Gigabit Ethernet Port
- IP65 waterproof enclosure
- 6000V Lightning Protection
- AP,Station,WISP operating mode supported

Product Features



25km+ transmission Range

iLitebeam 5AC adopts of independent external power amplifier and 23dBi directional antenna to provide an efficient way to pick up and maintain a stable signal for a wireless network up to 25km.



P2P Connection Throughput up to 450+Mbps

iLitebeam 5AC adopt of 11AC wave2 technology, it delivers 867Mbps speed rate at 5GHz radio. Come with Gigabit ethernet LAN port design , the maximum throughput test for PtP connection can be up to 450Mbps.



ipMAX--IP-COM TDMA proprietary protocol

ipMAX is IP-COM TDMA (Time Division Multiple Access) proprietary protocol to improve performance and capacity for wireless P2MP outdoor application scenarios.

In outdoor enviroment, the CPE use highly directional antennas to connect to the Basestation from distances that can span several kilometers. the CPE can't sense each other, they become "hidden nodes" and cannot coordinate access to the wireless channel. Thus the Basestation experiences frequent collisions from stations transmitting simultaneously. As the network scales, these collisions build up exponentially, increasing latency and lowering throughput.



iLink--Auto-bridge Technology Enable it To Easy Setup

iLink is IP-COM proprietary auto-bridge technology, It enables the CPE or basestation in factory default settings connect to each other automaticaly after the device is powered on. It is very useful for the person who is not familiar with network knowledge, especially for for CCTV surveillance transmission application.



Multiple Application Scenarios

Long-Distance Wireless Connection

One work as AP mode and another work as Station mode to create a long distance wrieless connecton for video surveillance and data transmission.

WISP(Client+Router) Mode

Wirelessly connect to WISP station/hotspot to share Internet to local wireless and wired network.

Product Features



Professional Outdoor Design

Equipped with IP65 waterproof enclouse and high quality hardware design, iLitebeam 5AC can work in various weather conditions, such as sunshine, rainfall or extremely low/high temperature environment

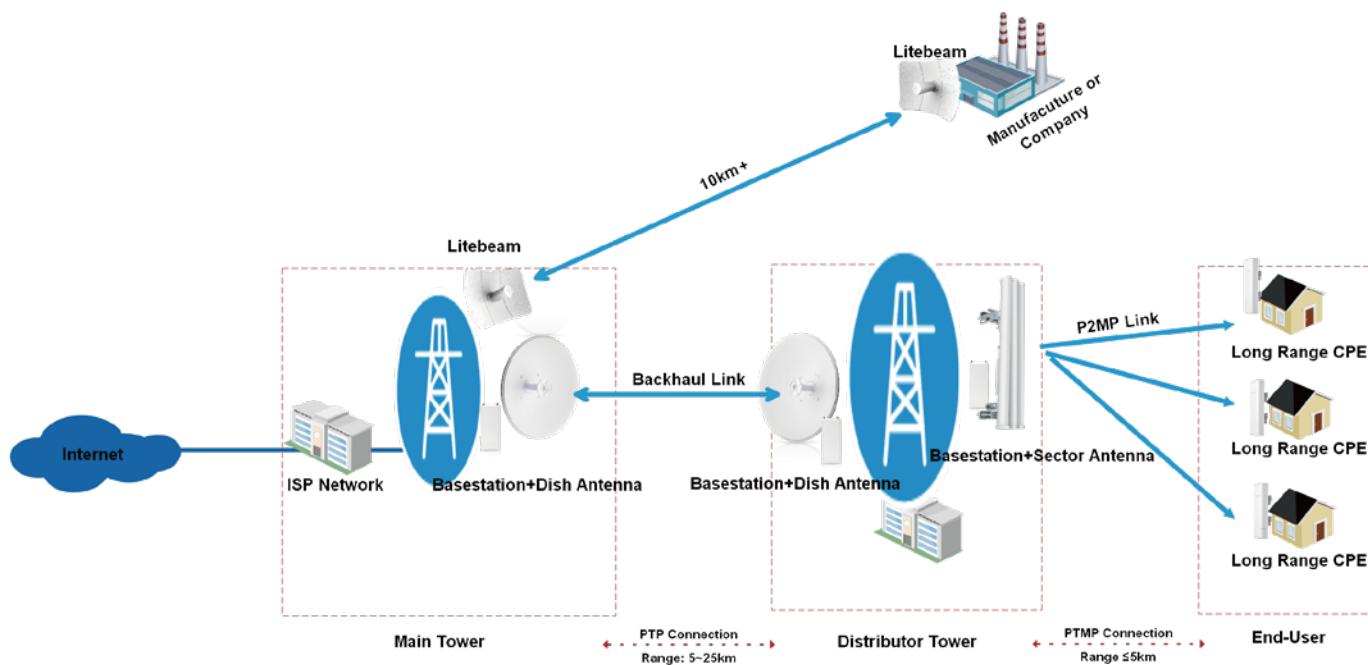


Easy to Setup and Manage

iLBE-5AC comes with a centralized management software that helps users easily to manage all the devices in the network from a single PC-CPE Controller.

Application Scenarios

iLitebeam 5AC Long Range Outdoor CPE is designed to PtP&P2MP solutions for video surveillance transmission and wireless broadband access.



Related Product



CPE6

- * 2+km transmission range
 - * 5GHz 11n 300Mbps
 - * 12dbi directional antenna
 - * IP65 waterproof enclosure
 - * 6000V Lightning Protection
 - * AP,Station,WISP operating mode supported
-



CPE12

- * 5+km transmission range
 - * 5GHz 11n 300Mbps
 - * 14dbi directional antenna
 - * IP65 waterproof enclosure
 - * 6000V Lightning Protection
 - * AP,Station,WISP operating mode supported
-



BS6

- * 5GHz 11n 300Mbps
 - * 2*RP-SMA connector
 - * IP65 waterproof enclosure
 - * 6000V Lightning Protection
 - * AP,Station,WISP operating mode supported
-



ANT19-5G120

- * 19dBi Dual Polarity Sector Antenna
 - * Frequency Range 5100~5850MHz
 - * Horizontal 120° Vertical 120° Elevation 4°
 - * 2*RP-SMA Connector
 - * 5+km transmission range with BS6
-

Specifications

Model	iLBE-5AC
Dimensions	391.5*280*223mm
Deployment	Pole Mount
Application Scenarios	PtP and PtMP wireless connection for Privated ISP access or CCTV Surveillance

Hardware Specifications

Frequency Range	5GHz
Compliant Standards	IEEE 802.11a/n/ac
Private TDMA Protocol	ipMAX
Maximum Wireless Rate	867Mbps
Interfaces	1*10/100/1000Mbps Ethernet Port
Antennas Gain	23dBi
Antenna Beamwidth	Horizontal: 10° Vertical: 10°
Reset Button	1
Power Consumption	7.5W
Waterproof Level	IP65
LED indicator	PoE/LAN,LED1,LED2,LED3
Power Method	24V0.5A Passive PoE
Lightning Protection	6000V
Passive PoE	Passive power over ethernet via PoE/LAN (+4,5pins; -7,8pins) Voltage range: 21-25V DC
Receiver sensitivity	11a 6Mbps -96dBm±1.5dBm 11n MCS7 HT20 -72dBm±1.5dBm 11ac MCS9 HT80 -65dBm±1.5dBm

Software Features

Operating mode	AP/Station/WISP/P2MP/WDS Repeater/Router
Enable/Disable Wireless Radio	Support
SSID Hidden	Support
Wireless Client isolation	Support
SSID Isolation	Support
Channel Bandwidth	20/40/80MHz

Specifications

Client Limitation For SSID	Support
Wireless Access Control	Support
Weak Signal Client Limitation	Support
Transmission Power	Adjustable power by 1dBm
WMM Capable	Support
APSD Capable	Support
Wireless Security	64/128 WEP,WPA-PSK,WPA2-PSK,WPA&WPA2-PSK,WPA,WPA2
Transparent Bridge	Support
VLAN Tagging for SSID	Support
DHCP Server	Support
VPN Pass-Through	PPTP,L2TP
Remote Web access	Support
Schedule Reboot	Support
Page Timeout	Support
Ping Watchdog	Support
Dyndns	noip, dyndns.org
Network Diagnoses	Ping, Traceroute, Signal Scan
Time&Date Setting	Support
Firmware upgrade	Support
Backup/Restore Configuration	Support
Username Management	Support
System Log	Support
Managed By Controller	PC Software -- CPE Controller

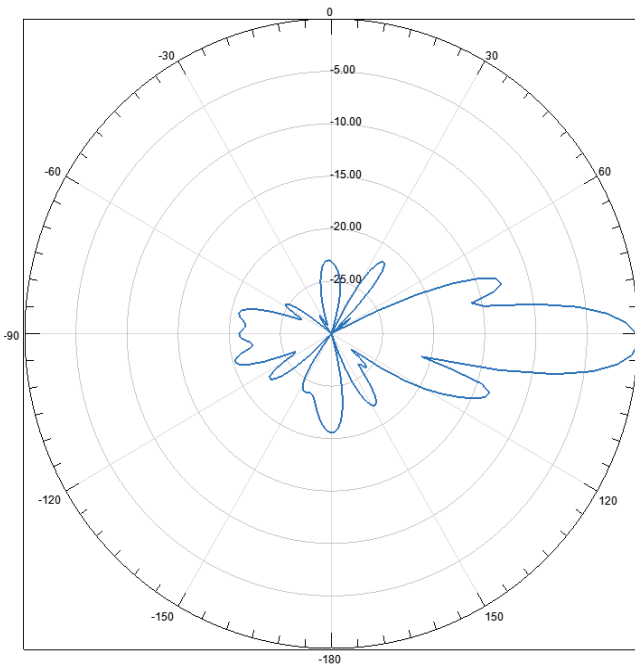
Others

Package Contents	1*5GHz 23dBi ipMax AC Gigabit Outdoor CPE iLBE-5ACV1.0 1*PoE Power Adapter 1*Quick Installation Guide
Operating Temperature	-30°C ~ 60°C
Storage Temperature	-40°C ~ 70°C
Operating Humidity	10%~90% non-condensing

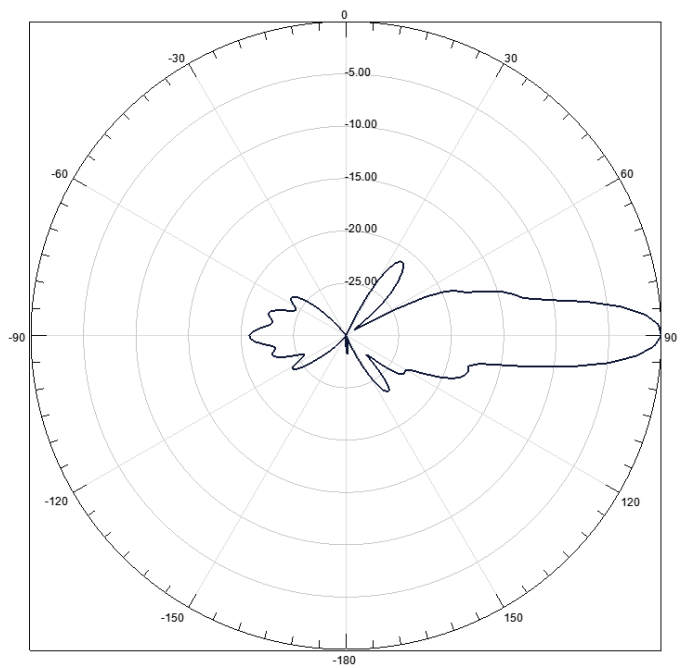
Working Environment

Storage Humidity	10%~90% non-condensing
Default login IP	192.168.2.1
Default Login Username	admin
Default Login Password	admin
Certifications	FCC/CE/RoHS

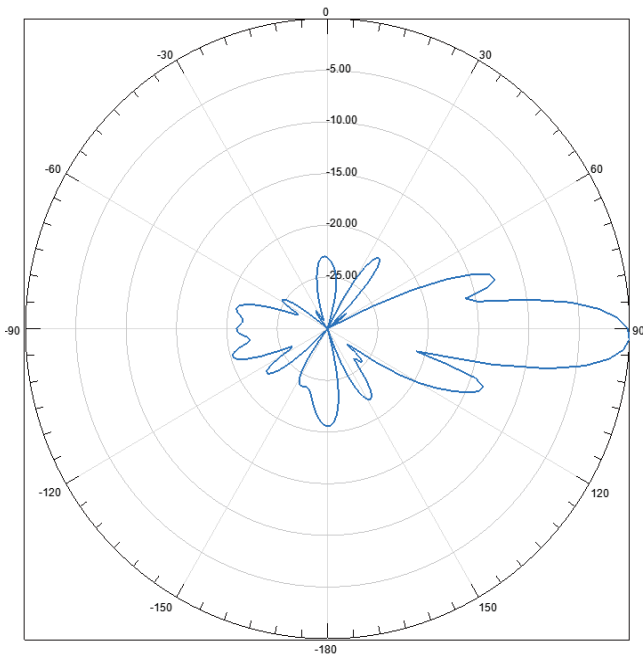
Antenna



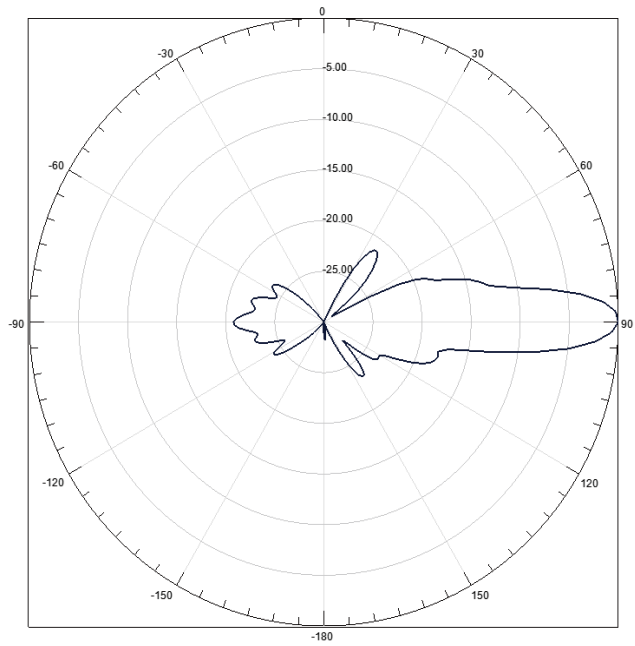
Horizontal Elevation



Horizontal Azimuth



Vertical Elevation



Vertical Azimuth

IP-COM
World Wide Wireless

Headquarters

IP-COM Networks Co.,Ltd.

Tel: +86 755-27653089

Fax: +86 755-27657178

Email: marketing@ip-com.com.cn

Website: www.ip-com.com.cn

ADD: Tower E3, No1001, Zhongshanyuan Road, Nanshan District, Shenzhen, China.

Copyright©2020 IP-COM Networks Co.,Ltd.All Rights Reserved.

